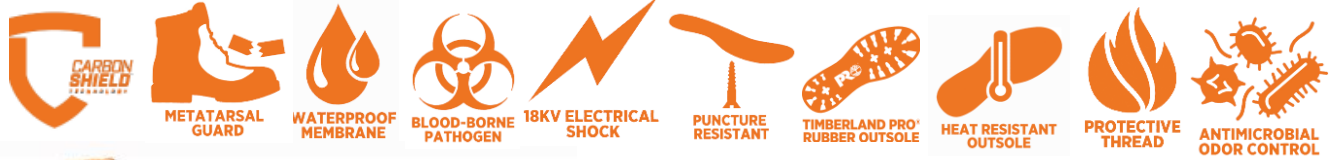




**ENDURANCE HD**  
**8" | COMPOSITE SAFETY TOE | WATERPROOF**  
**TB0A1WUT001**

30 Day US and Canada Only



**FEATURES:**

- Composite safety toe powered by CarbonShield™ Technology
- Non-metallic puncture plate
- Premium full-grain waterproof leather with waterproof membrane
- Direct inject construction
- Smart Hinge Met-Guard protection powered by SKYDEX®
- Protective thread includes DuPont™ Kevlar® Aramid fiber
- Mesh lining with antimicrobial treatment
- Non-metallic shank
- Brass eyelets with zinc dual purpose top hooks
- Weight 9W ½ pair 1.42g

**TIMBERLAND® PRO RUBBER OUTSOLE POLYURETHANE MIDSOLE, DYNAMIC ANTI-FATIGUE TECHNOLOGY POLYURETHANE**

- Slip resistant
  - Abrasion resistant
  - Oil-resistant
  - Heat resistant up to 1000°F using EN/ISO 20344:2011 (537°C)
  - Non-marking
  - Ladder Lock™ outsole radius
- Durable: resists compression set over time
  - Resilient: recovers for next foot strike
  - Mono-sided inverted Anti-Fatigue Technology cones
  - Contoured bio-mechanically engineered top surface helps maintain proper gait
  - Dynamic arch adapts to different foot shapes for maximum comfort

**7-11 12 13 14 15 W**

USA Men's	7	7.5	8	8.5	9	9.5	10	10.5	11	12	13	14	15
USA Women's	8.5	9	9.5		10	10.5	11	11.5	12				
United Kingdom	6	6.5	7	7.5	8	8.5	9	9.5	10	11	12	13	14
Europe	39	40	41	41.5	42	42.5	43	43.5	44	46	47	48	49
Centimeters	25,0	26,0	26,0	26,5	27,0	27,5	28,0	28,5	29,0	30,0	31,0	32,0	33,0

# Timberland® PR

## ENDURANCE HD

8" | COMPOSITE SAFETY TOE | WATERPROOF

TB0A1WUT001



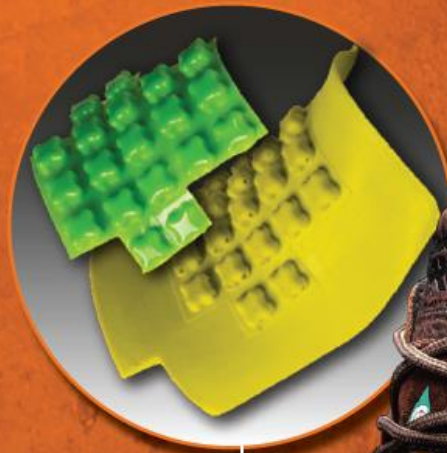
ANTI-FATIGUE  
TECHNOLOGY™

SKYDEX  
MET•GUARD



### SKYDEX® MET•GUARD

- High-impact shock absorption without the bulk
- Flexible design reduces foot fatigue
- Thin and lightweight protection
- Open airflow reduces heat buildup



- FR**
- Absorption des chocs d'impacts importants sans le volume
  - Flexibilité conçue pour réduire la fatigue du pied
  - Protection mince et légère
  - Aération ouverte pour éviter l'accumulation de chaleur

- ES**
- Absorción de golpes de alto impacto sin tanto volumen
  - Diseño flexible que reduce la fatiga del pie
  - Protección delgada y ligera
  - El flujo de aire abierto reduce la acumulación de calor



[www.skydex.com/patent](http://www.skydex.com/patent)



# ENDURANCE HD

8" | COMPOSITE SAFETY TOE | WATERPROOF

TB0A1WUT001

## SLIP TEST RATING



No shoe is "slip proof." Footwear is one small part of any Slip Hazard Assessment Defense Program. You should always consult with your Company Safety Manager to determine the most appropriate footwear for your work environment. Using this information, it is possible to seek advice from the Manufacturer or Distributor regarding appropriate application based on test results.

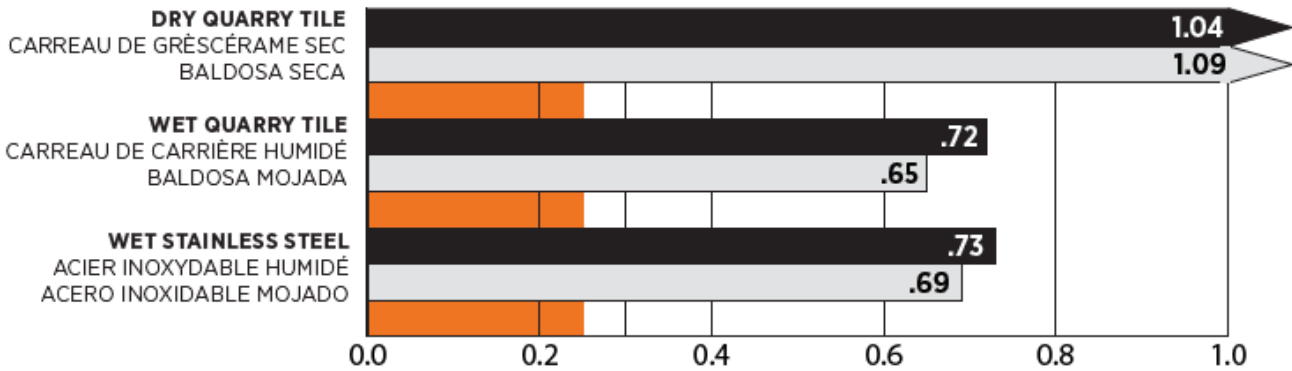
### EXCERPT FROM CSA Z195-14 WHOLE SHOE SLIP RESULTS

TEST REPORT: CHT0293287/1951  
OUTSOLE: PRO442 TEST LAB: 12A10

The below chart provides the slip scores for the outsole of the shoe.

- HEEL / TALON / TALÓN
- FLAT / PLAT / PARTE PLANA
- MINIMUM REQUIRED / MINIMUM REQUIS / MÍNIMO REQUERIDO

### CSA Z195-14



# Timberland<sup>®</sup> PRO<sup>®</sup>

## ENDURANCE HD

8" | COMPOSITE SAFETY TOE | WATERPROOF

TB0A1WUT001



### TECHNOLOGIES



#### Composite Safety Toe

Lightweight, non-metallic, asymmetrical-shaped toe cap. Meets US and Canadian safety standards including ASTM F2412-18a and ASTM F2413-18 I and C Impact and compression safety standards and CAN/CSA-Z195-14 Grade 1.



#### CarbonShield™ Technology

Engineered with nanotechnology, adds strength and unmatched protection, provides a better fit, and reduces weight.



#### Waterproof Membrane

Delivers maximum waterproof protection and blood-borne pathogen resistance. Meets ASTM F1671-13 safety standard.



#### Electrical Shock Resistant

Meets CAN/CSA-Z195-14 safety standards for footwear incorporating electric shock-resistant soles.



#### SKYDEX® Met-guard technology

Engineered to provide lightweight impact protection to met guard footwear. Meets US and Canadian safety standards including ASTM F2412-18a and ASTM F2413-18 Class Mt and CAN/CSA-Z195-14 metatarsal resistance.



#### Puncture Resistant

Flexible non-metallic plate minimizes the likelihood of puncture wounds. Meets US and Canadian safety standards including ASTM F2412-18a, ASTM F2413-18 and ASTM F2892-18 PR puncture resistance and CAN/CSA-Z195-14 Grade 1 with protective soles.



#### Heat-Resistant Outsole

Solid Timberland PRO® rubber compound outsole resists hot contact using EN ISO 20344:2004 B.7 testing standard at 572°F to 1000°F.



#### Protective Thread

Safety footwear made with sewing thread that helps to maintain stitched seam integrity for workers exposed to a variety of cut, abrasion and high-heat hazards.



#### Anti-Fatigue Technology

A comfort system designed with shock-absorbing, geometrical technology that returns energy back to the foot to deliver all-day support and comfort.



#### 30-Day Comfort Guarantee

If you don't believe Timberland PRO® footwear with Anti-Fatigue Technology, PowerFit™ comfort system or SensorFlex™ technology are not more comfortable than the brand you're currently wearing, return them within 30 days and we'll refund your purchase price, provided you still have your dated receipt of purchase. Call 1-888-802-9947 from US and 1-800-501-3054 from Canada. Available in the United States and Canada only.